

## Yield Prophet Marketing Services

Yield Prophet offers a range of regional yield forecasting services designed to assist with grain marketing. Services can be tailored to suit individual business needs.

### Production report:

Each year Yield Prophet receives 500 paddock subscriptions from across Australia. Using these paddocks to represent regional conditions and agronomy, production can be estimated on a regional, state or national level. The incorporation of complex crop simulations provides production reports with a scientific level of objectivity and accuracy.

### Rainfall & plant available water summary:

A regional rainfall summary combined with simulated estimates of current soil plant available water supports yield forecasts given in the production report.

### Agronomic conditions summary:

An agronomic summary from a national network of independent consulting agronomists complements and validates simulation output.

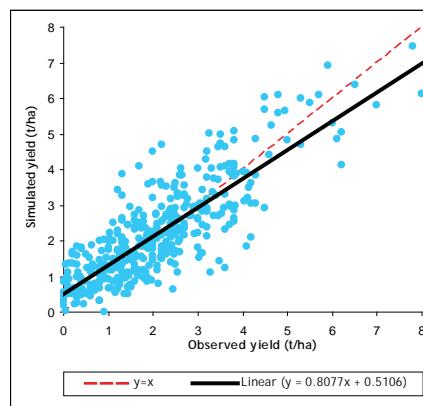
### Seasonal forecast summary:

Summaries of seasonal forecasts and their likely impact on crop yield can further reduce uncertainty of production estimates.

## Yield Prophet Since 2004

Yield Prophet has provided accurate and objective assessments of crop yields across southern Australia since 2004. During this time, Yield Prophet has accounted for 68% of the variation in observed wheat and barley yields.

French and Schultz water-use efficiency, a commonly used yield estimator, can explain only 50% of the variation observed in this data.



All returned simulated vs observed wheat and barley yields for Yield Prophet 2004 – 2008

### For further information contact:

Tim McClelland  
 T: (03) 5492 2787 F: (03) 54922 753  
 M: 0400 090 659  
 E: [yieldprophet@bcg.org.au](mailto:yieldprophet@bcg.org.au)  
 W: [www.yieldprophet.com.au](http://www.yieldprophet.com.au)  
 A: P.O. Box 85, Birchip VIC, 3483

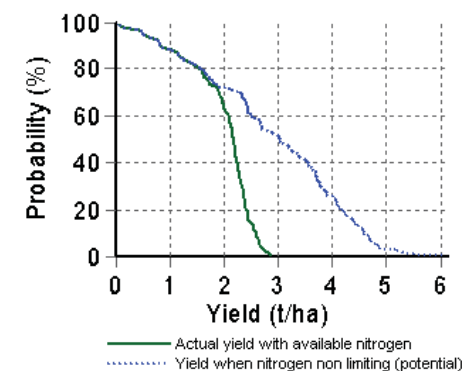


**Important Notice:** Yield Prophet does not generate recommendations or advice. Yield Prophet uses the computer simulation model APSIM together with paddock specific soil, crop and climate data to generate likely outcomes from farming decisions. APSIM does not take into account weed competition, pest/disease pressure, pesticide/herbicide damage, farmer error, or extreme events (such as extreme weather, flood and fire). For more information about APSIM please go to [www.apsim.info](http://www.apsim.info)

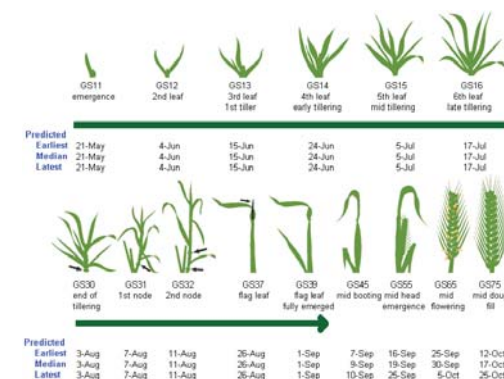


## CORPORATE AGRIBUSINESS

### Yield Probability Forecasting

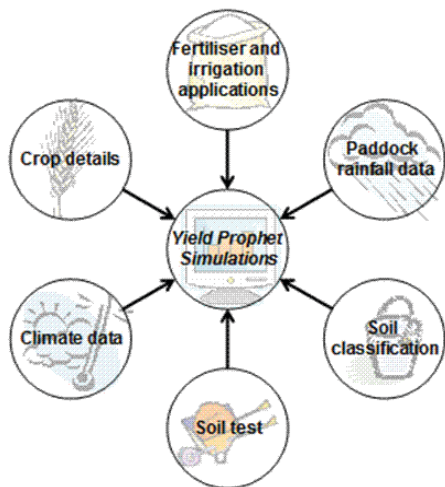


### Crop Resource Information & Decision Support



## Yield Prophet production services

Yield Prophet is an on-line crop production model that provides grain growers and corporate agribusinesses with paddock-specific yield forecasts as well as crop growth and resource information. It incorporates soil test results, APSOil characterisations, growing season rainfall, crop management and historic climate data to provide accurate and objective real-time assessments of seasonal yield potential.



Yield Prophet acts as an interface to the crop production model APSIM ([www.apsim.info](http://www.apsim.info)), and simplifies complex simulation output into reports specifically designed to assist in crop management.

### Yield Prophet workshops and help line

Individuals and businesses who subscribe to Yield Prophet receive assistance via a helpline and may attend workshops to ensure easy operation and interpretation of outputs.

Yield Prophet is a point-specific tool. Maximum value can be obtained by subscribing a range of paddocks of varying region, soil type, rotational history and crop type. Yield Prophet is currently validated for wheat and barley.

Yield Prophet is a fully integrated package that allows growers and corporate agribusinesses to manage seasonal variability and climate risk maximising profit and minimising risk.

### Applications:

- assessment of sowing date and variety for greatest yield potential, including frost and heat-shock risk
- real time assessment of crop yield potential through the growing season
- benchmarking of crop growth and performance, resource use and availability (water and nitrogen)
- impact of different nitrogen fertiliser rates and strategies on yield forecasts
- probability of a positive gross margin on nitrogen fertiliser inputs
- relative comparison of hay and grain yield
- impact of climate change on paddock-level production

### Yield Prophet and corporate agribusiness

Yield Prophet provides corporate agribusiness the opportunity to deliver an enhanced service to their clients. Yield Prophet outputs combined with your business's existing expertise can ensure that clients have the greatest opportunity to reach their potential.

## Subscription costs:

There are three costs associated with subscribing to Yield Prophet: a subscription fee, soil sampling and soil analysis costs. The total cost of subscription usually ranges between \$300 and \$400 (ex GST) per paddock. A breakdown of these costs is shown below.

### Yield Prophet subscription

- \$155 (ex GST) per paddock for the first 30 paddocks
- each additional paddock \$100 (ex GST)

### Soil sampling and analysis

Soil test information is an essential component of Yield Prophet simulations. Subscribers will need to source soil test results for each paddock registered in Yield Prophet. Soil sampling and analysis costs are dependent on the soil sampling contractor and soil laboratory used. However, prices are approximately:

- soil sampling: \$100 (ex GST) per paddock
- soil analysis: between \$60 to \$100 (ex GST) per paddock

**subscribe on-line at**  
**[www.yieldprophet.com.au](http://www.yieldprophet.com.au)**